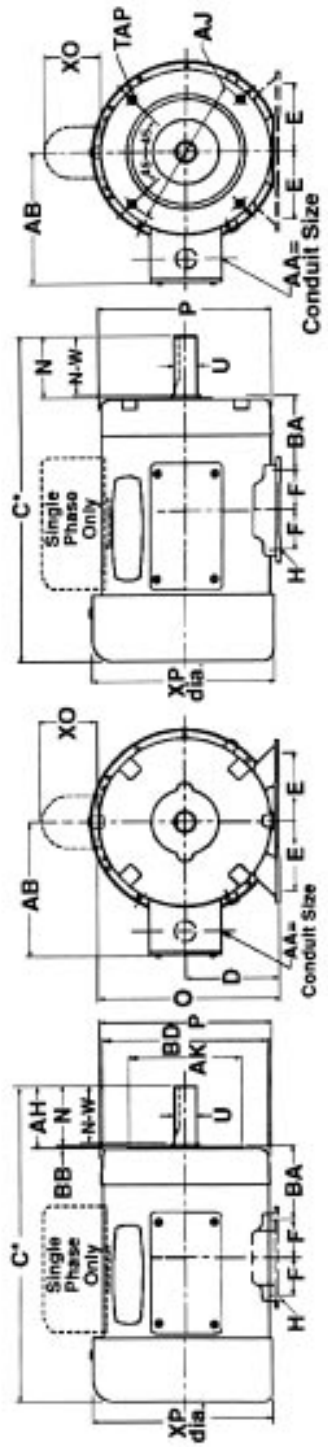


NEMA ELECTRIC MOTORS QUICK REFERENCE MOTOR DIMENSIONS

* Dimension marked so are subject to variation depending on the brand of the motor being used and may not be shown.
The dimensions listed here are intended for reference purposes only. Dimensions shown in the shaded areas will not change from one brand to another for motors built to NEMA rigid base or "C" face mounted dimensional standards. Other dimensions shown are determined by the manufacturer rather than NEMA standards. Be aware of the NEMA frame suffix letters other than those listed above as they denote different mounting or shaft dimensions. Motors having no suffix letters (other than Nema frames 42, 46, 56) are built prior to NEMA standards.
Frame letters are often used by manufacturers (such as 6184T) to denote differences in the NEMA standard mounting dimensions.
*NEMA C face motors also have rigid base have different BA dimensions in the following instances:
143TC & 145TC - 2 1/2" instead of 2 1/4"
182TC & 184TC - 3 1/2" instead of 3 1/4"
213TC & 215TC - 4 1/2" instead of 4 1/4"
254TC & 256TC - 4 1/2" instead of 4 1/4"
** XO denotes clearance for the capacitors of single phase motors through to 215T frame. On three phase 254T frame and larger motors T denotes clearance for the lifting eyebolt.



FRAME	NEMA T FRAME DIMENSIONS																	POWER RANGE HP @ MOTOR RPM							
	D	E	F	H	N	O	P	U	N-W	AA	AB	AH	AJ	AK	BA [^]	BB	BD	XO/T**	XP	TAP	KEY	3600	1800	1200	900
42	2 5/8	1 3/4	2 7/32	9/32	1 1/4	5 1/16	4 7/8	3/8	1 1/8	3/8	4 1/2	1 5/16	3 3/4	3	2 1/16	1/8	4 7/8	1 5/8	5 1/8	1/4-20(4)	3/64 FLAT				
48	3	2 1/8	1 3/8	1 1/32	1 5/8	5 7/8	5 5/8	1/2	1 1/2	1/2	4 7/8	1 11/16	3 3/4	3	2 1/2	1/8	5	2 1/4	5 7/8	1/4-20(4)	3/64 FLAT				
56	3 1/2	2 1/2	1 1/2	1 1/32	2	6 7/8	6 5/8	5/8	1 7/8	1/2	5 3/8	2 1/16	5 7/8	4 1/2	2 3/4	1/8	6 1/2	2 1/4	7 1/4	3/8-16(4)	3/16				
143T	3 1/2	2 3/4	2 1/2	1 1/32	2 3/8	6 7/8	6 5/8	7/8	2 1/4	3/4	5 3/8	2 1/8	5 7/8	4 1/2	2 1/4	1/8	6 1/2	2 1/4	7 1/4	3/8-16(4)	3/16				
145T	4 1/2	3 3/4	2 3/4	1 3/32	--	8 3/4	8 1/2	1 1/8	2 3/4	3/4	6 3/8	2 5/8	7 1/4	8 1/2	2 3/4	1/4	8 7/8	2 1/4	9 1/8	1/2-13(4)	1/4				
182T	4 1/2	4 1/4	3 1/2	1 3/32	--	10 3/4	10 1/4	1 3/8	3 3/8	3/4	8 3/8	3 1/8	7 1/4	8 1/2	3 1/4	1/4	9	2 1/4	10 3/4	1/2-13(4)	5/16				
184T	5 1/4	4 1/4	3 1/2	1 7/32	--	13	13	1 5/8	4	1	10 1/2	3 3/4	7 1/4	8 1/2	4 1/4	1/4	10	2 1/4	13	1/2-13(4)	3/8				
254T	6 1/4	5	4 1/8	1 7/32	--	14 1/2	13 3/8	1 7/8	4 5/8	4 3/8	11 7/8	4 3/8	9	10 1/2	4 3/4	1/4	11 1/4	2 1/4	14 1/2	1/2-13(4)	1/2				
284T	7	5 1/2	4 3/4	1 7/32	--	16 1/8	15 7/8	2 1/8	5 1/4	3 1/2	13	5	11	12 1/2	5 1/4	1/4	14	2 5/8	16 1/8	5/8-11(4)	1/2				
284TS	8	6 1/4	5 1/4	2 1/32	--	16 1/8	15 7/8	2 1/8	5 1/4	3 1/2	13	5	11	12 1/2	5 1/4	1/4	14	2 5/8	16 1/8	5/8-11(4)	1/2				
286T	9	7	5 5/8	2 1/32	--	18 3/8	17 7/8	2 3/8	5 7/8	5 5/8	14	5 5/8	11	12 1/2	5 7/8	1/4	14	2 5/8	18 3/8	5/8-11(8)	5/8				
286TS	9	7	6 1/8	2 1/32	--	18 3/8	17 7/8	2 3/8	5 7/8	3 1/2	14	5 5/8	11	12 1/2	5 7/8	1/4	14	2 5/8	18 3/8	5/8-11(8)	5/8				
324T	10	8	6 1/4	1 3/16	--	20	19 5/8	2 7/8	7 1/4	4	16	7	11	12 1/2	6 5/8	1/4	14	2 5/8	20	5/8-11(8)	3/4				
324TS	10	8	6 1/4	1 3/16	--	20	19 5/8	2 7/8	7 1/4	4	16	7	11	12 1/2	6 5/8	1/4	14	2 5/8	20	5/8-11(8)	3/4				
326T	11	9	7 1/8	1 3/16	--	22 1/2	22	3 3/8	8 1/2	3	20	8 1/4	14	16	7 1/2	1/4	14	3	22 1/2	5/8-11(8)	1/2				
326TS	11	9	7 1/8	1 3/16	--	22 1/2	22	3 3/8	8 1/2	3	20	8 1/4	14	16	7 1/2	1/4	14	3	22 1/2	5/8-11(8)	1/2				
364T	11	9	7 1/4	1 3/16	--	22 1/2	22	3 3/8	8 1/2	3	20	8 1/4	14	16	7 1/2	1/4	14	3	22 1/2	5/8-11(8)	7/8				
364TS	11	9	7 1/4	1 3/16	--	22 1/2	22	3 3/8	8 1/2	3	20	8 1/4	14	16	7 1/2	1/4	14	3	22 1/2	5/8-11(8)	7/8				
365T	11	9	7 1/4	1 3/16	--	22 1/2	22	3 3/8	8 1/2	3	20	8 1/4	14	16	7 1/2	1/4	14	3	22 1/2	5/8-11(8)	7/8				
365TS	11	9	7 1/4	1 3/16	--	22 1/2	22	3 3/8	8 1/2	3	20	8 1/4	14	16	7 1/2	1/4	14	3	22 1/2	5/8-11(8)	7/8				
404T	12	10	8 1/4	1 3/16	--	25	24 1/2	4 1/8	9 1/2	4	22	9	15	18	8 1/2	1/4	16	3 1/2	25	5/8-11(8)	1				
404TS	12	10	8 1/4	1 3/16	--	25	24 1/2	4 1/8	9 1/2	4	22	9	15	18	8 1/2	1/4	16	3 1/2	25	5/8-11(8)	1				
405T	12	10	8 1/4	1 3/16	--	25	24 1/2	4 1/8	9 1/2	4	22	9	15	18	8 1/2	1/4	16	3 1/2	25	5/8-11(8)	1				
405TS	12	10	8 1/4	1 3/16	--	25	24 1/2	4 1/8	9 1/2	4	22	9	15	18	8 1/2	1/4	16	3 1/2	25	5/8-11(8)	1				
444T	14	12	10 1/4	1 3/16	--	28 1/2	28	4 7/8	10 1/2	4	25	10	17	20	9 1/2	1/4	18	4	28	5/8-11(8)	1 1/4				
444TS	14	12	10 1/4	1 3/16	--	28 1/2	28	4 7/8	10 1/2	4	25	10	17	20	9 1/2	1/4	18	4	28	5/8-11(8)	1 1/4				
445T	14	12	10 1/4	1 3/16	--	28 1/2	28	4 7/8	10 1/2	4	25	10	17	20	9 1/2	1/4	18	4	28	5/8-11(8)	1 1/4				
445TS	14	12	10 1/4	1 3/16	--	28 1/2	28	4 7/8	10 1/2	4	25	10	17	20	9 1/2	1/4	18	4	28	5/8-11(8)	1 1/4				
445TS	14	12	10 1/4	1 3/16	--	28 1/2	28	4 7/8	10 1/2	4	25	10	17	20	9 1/2	1/4	18	4	28	5/8-11(8)	1 1/4				