

ROUND BORE WELD-IN HUBS

Bore	Keyway	A	B	C	D	Part Number
1/2"	None	58.5	63	58	49	91/80067
0.750"	0.187"	58.5	63.5	58	49	91/80013
0.875"	#	58.5	63.5	58	49	91/80014
25 mm	8 mm	58.5	63.5	58	49	91/80026
1.000"	0.250"	58.5	63	58	49	91/80015
1.250"	0.312"	58.5	63	58	49	91/80024
28 mm	8 mm	58.5	63.5	58	49	91/80075
30 mm	8 mm	58.5	63.5	58	49	91/80079
1.375"	0.3125"	58.5	63.5	58	49	91/80065
35 mm	10 mm	58.5	63.5	58	49	91/80050
38 mm	10 mm	58.5	63.5	58	49	91/80051
1.500"	0.375"	58.5	63	58	49	91/80060
40 mm	12 mm	58.5	63.5	58	49	91/80052
42 mm	12 mm	58.5	63.5	58	49	91/80053
1.750"	0.437"	58.5	69.5	65	49	92/80061
45 mm	14 mm	58.5	70	65	49	92/80054
48 mm	14 mm	58.5	76.2	65	49	92/80055
50 mm	14 mm	58.5	76.2	65	49	92/80056
2.000"	0.500"	58.5	80	65	49	92/80062
55 mm	16 mm	58.5	80	75	49	92/80057
DIN 3 Taper	4 mm	58.5	63	58	49	91/80017

Combination 3/16" and 1/4" keyway

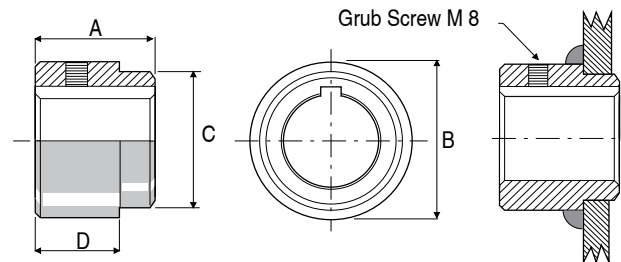
For connecting Hydraulic Orbit Motors to fabricated Winch Drums and Mixer Paddles, Electric Motor Sprocket Hubs and Machine Bosses.

Manufactured from mild steel for ease of welding.

Bore tolerance + 0.03 mm to + 0.06 mm.

Machined spigot dim. "C" tolerance +0.02 mm to + 0.05 mm.

Finish is black Colorsal.

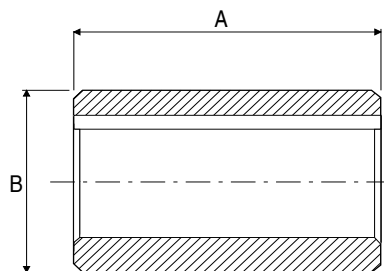
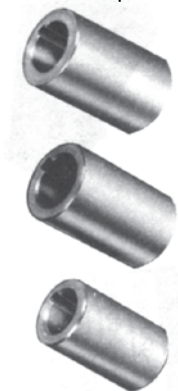


Other sizes may be manufactured to order if in sufficient quantity.

Contact our sales office for a quote.

ROUND BORE MUFF COUPLINGS

Used for joining of shafts on pumps, electric motors, special machines or any application where a keyed round bore sleeve is required. The outside diameter is not necessarily held true with bore. Finish is black Colorsal rust preventative. Not threaded for set screw.



Bore	Keyway	A	B	Part Number
19 mm	6 mm	70 mm	38.1 mm	95/60073
0.750"	0.187"	2.75"	1.50"	95/60013
0.875"	#	2.75"	1.50"	95/60014
25 mm	8 mm	2.75"	44.45 mm	95/60026
1.000"	0.250"	2.75"	1.75"	95/60015
28 mm	8 mm	76 mm	50.8 mm	95/60075
30 mm	8 mm	76 mm	50.8 mm	95/60030
1.250"	#	3.00"	2.00"	95/60087
32 mm	10 mm	76 mm	50.8 mm	95/60080
1.375"	0.312"	3.00"	2.25"	95/60065
1.437"	0.375"	3.00"	2.12"	95/60089
1.500"	0.375"	3.00"	2.25"	95/60060

Combination 3/16" and 1/4" keyway for p/n 95/60014

Combination 1/4" and 5/16" keyway for p/n 95/60087

Specials made to order. Min batch quantity - 10 off