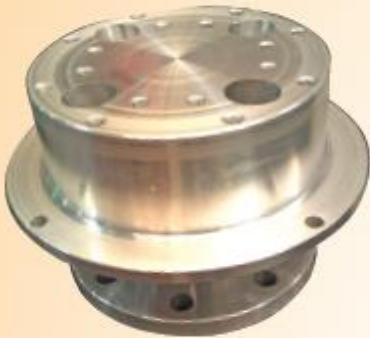
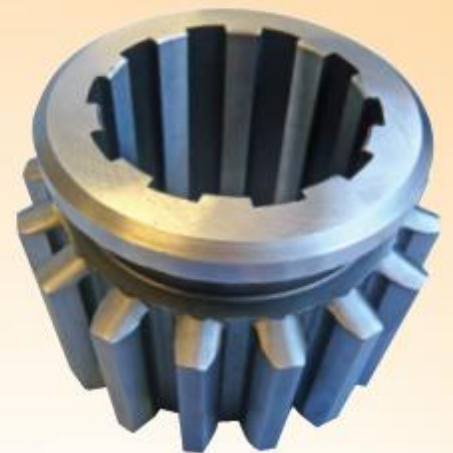


Custom machining and fabrication



Custom Splines
Hubs
Couplings
Shafts
Custom Welding
Gears
Gearbox Rebuilds



cool running



specialist power
transmission and
heat transfer
engineers

PH: 0266 818800 | FAX: 0266 818888

EMAIL: sales@oemdynamics.com.au

Aftermarket Services and Replacement Parts

Our Aftermarket Service division based in Ballina, can provide batch manufacture of components, using our modern CNC machines for production turning, gear and spline hobbing and shaping.

OEM Dynamics offers a reconditioning service on all OEM power transmission components as well as other manufacturer's pump drives, transfer boxes and right angle drives.

MACHINING CAPABILITIES

❖ Turning

- (1) 5 Axis CNC Lathe, Max Diameter 710 mm, Max Length 1500 mm, Live tooling
- (1) 4 Axis CNC Lathe, Max Diameter 450 mm, Max Length 800 mm, Live tooling
- (1) 4 Axis CNC Lathe, Max Diameter 450 mm, Max Length 440 mm, Live tooling
- (1) Conventional Lathe, Max Diameter 300 mm, Max Length 1000 mm

❖ Spline Cutting

- (1) Horizontal broach, Pull capacity 70,000 lbs, various broaches up to 3" diameter
- (2) Shaper cutters, Max Stroke 4"
- Splines also cut on hobbing machines.
- Tooling for up to 3 DP and 5 module splines

❖ Gear Cutting

- (2) Vertical hobbing machine, Max OD 300 mm x max Length 1000mm, 200mm cut length
- (1) Horizontal hobbing machine, Max OD 350 mm x max Length 1000mm, 1000mm cut length
- Cutters for up to 3 DP

❖ CAD Modelling

OEM Dynamics can offer fast, efficient and accurate modelling of parts and assemblies using the latest *Solid Edge* CAD modelling program from Siemens PLM. We can import/export DXF, DWG, STP and IGES formats and can export to pdf, 3d models or 3d pdf.

❖ Milling

- (1) Conventional Vertical Mill
- (1) Conventional Horizontal Mill
- Milling also available on CNC Lathes

❖ Drilling

- (1) CNC Vertical Drill, Max Hole Diameter 16 mm x max Spacing 400 mm
- (14) Conventional drill stands

❖ Welding

Steel, Stainless Steel and Aluminum

❖ Gearbox and pump drives

Design and manufacture for new installation or replacement
Rebuild and service of existing plant

❖ Other service we can provide

Finishing process including blackening, powder coating, painting, anodizing, electroplating and galvanizing.
Import and export service available.

❖ Quality Assurance

Compliance and certified to ISO 9001 fully calibrated measuring instruments and master gauges.
Material traceability as required
Manuals and documentation as required

Our machining capacity includes the Okuma Multus multifunction CNC machine. This machine is equipped with double ended spindles for complete machining of parts in one set up. This five axis machine; C, X, Y Z and B; allows operations such as turning, milling, drilling and tapping to be performed at any angle. The machine tool capacity is 80 stations and automatic bar feed up to 100mm diameter. Single work pieces up to 710mm diameter or 1500 mm in length can be accommodated in the machine. The capacity and versatility of our CNC machines enable work pieces of considerable complexity to be produced with a minimum number of operations. Such versatility permits considerable reduction in cost whilst maintaining a high degree of quality and accuracy.